



The History of Ewyas Lacy

Document Record

Held at: National Archives

Reference: AE/1-4

Source: Original Survey Particulars

Title: Digital Archive: Royal Commission on Ancient and Historical Monuments - Photographs of original survey particulars, Part 7 of 13

Place name: Craswall, Llanveynoe, Longtown, Michaelchurch Escley

Date: 1920s

Description:

Part 7: Llanveynoe

This Digital Archive collection contains photographs of surviving parts of the initial surveys of Craswall, Michaelchurch Escley, Llanveynoe and Longtown carried out in the 1920's by the Royal Commission on Ancient and Historical Monuments. They comprise photographs, hand written survey notes and the annotated maps the surveyors used, which are held in the National Archives and formed the basis for the eventual RCAHM Reports on the buildings and structures in the parishes. The photographs have been made available by Chris Hodges, to whom we are most grateful.

ELSG Ref RCAHM Records: Llanveynoe

90	Upper Turnant 1
91	Upper Turnant 2
92	Upper Turnant photo
93	Cayo Farm 1
94	Cayo Farm 2
95	Cayo Farm photo1
96	Cayo Farm photo2
97	Charity Farm 1
98	Charity Farm 2
99	Charity Farm photo
100	Glan Dwr 1
101	Glan Dwr 2
102	Glan Dwr photo1



The History of Ewyas Lacy

Document Record

103	Glan Dwr photo2
104	Glan Dwr photo 3
105	Glan Dwr photo4
106	Upper Olchon Farm 1
107	Upper Olchon Farm 2
108	Upper Olchon Farm photo1
109	Upper Olchon Farm photo2
110	Olchon Court 1
111	Olchon Court 2
112	Olchon Court photo1
113	Olchon Court photo2
114	Firs Farm 1
115	Firs Farm 2
116	Firs Farm photo1
117	Firs Farm photo2
118	Blaen Olchon 1
119	Blaen Olchon 2
120	Blaen Olchon photo1
121	Blaen Olchon photo2

The History of Ewyas Lacy

Document Record

B. RECORD CARD FOR SECULAR MONUMENTS.
(N.B.—Detail of special interest is to be entered here, but described fully on a separate card.)

1. **Name and situation of Monument** (with owner's Name and Address). *Wolfe Turret, 300 yds S. of*

2. **General appearance:** (a) No. of storeys. *One & a half*
(b) Building materials. *Stone walls*
(c) Roofs. *Stone slabs*

3. **Historical development** (with dates and small sketch plan).
A 16th or early 17th century house probably of rectangular plan with three rooms in main part. The old timber framing in the gable head in the middle of the W. side of the main block may indicate that the back (W) addition is also on the site of the original plan making the plan T-shaped originally, and that the building was a timber-framed house afterwards encased in stone.

4. **Special features** (if any):

5. **Elevations:** (Beginning with the main front, and mentioning, in the following order:—(a) Walls; (b) Gables; (c) Doors; (d) Windows; (e) Chimneys; (f) Rainwater heads and pipes.)
Stone wall, with modern doors and windows. The original doorway opposite the central chimney stack has been blocked. It had a segmental head. The central chimney is a plain square one of stone.

6. **Grounds:** (a) Gardens; (b) Outbuildings; (c) Statuary, sundials, etc.

County. *Shropshire*
Parish. *Blancely*
Sub-Commission. *Secular*
No. of Monument. *10*

P.T.O.

The History of Ewyas Lacy

Document Record

7. **Interior:** (Disposition of rooms, if original, giving fittings as they occur (see list), beginning with the ground floor, following with the basement, and working up to the attics; staircases in the same manner.)

Fittings:
(Reminder list).

- (1) Ceilings.
- (2) Cupboards (fixed).
- (3) Doors and Overdoors.
- (4) Fireplaces and Mantel-pieces.
- (5) Glass.
- (6) Paintings.
- (7) Panelling.
- (8) Parquetry and floors.
- (9) Plasterwork on internal walls.
- (10) Roofs and beams (internal).
- (11) Screens.
- (12) Tapestries.
- (13) Miscellaneous (e.g., carving, ironwork, locks, &c.).

All three rooms on the ground floor have stop-chamfered cross beams, that in the S. room having brach stops, and all have stop-chamfered ~~floor~~ ceiling-joints. The middle room has a large fireplace.

The upper rooms are partly in the roof which is a plain one with two rough purlins. The gabled W. wall of the middle chamber is of old timber framing.

In the middle room - ground floor - in the S. wall is a cupboard with a door of early 17th century oak panelling.

8. **Condition:** Good structurally but poor fittings

9. **Visited by** (with dates): J.W. Blue 24 March 1927

10. **Bibliography:**

11. **No. of Ordnance Sheet** (6-in.): XLIII. 5E.

12. **Signature of Investigator.** J.W. Blue F

The History of Ewyas Lacy

Document Record



rounds : (a) Gardens ; (b) Outbuildings ; (c) Statuary, sundials, etc.

The History of Ewyas Lacy

Document Record

B.

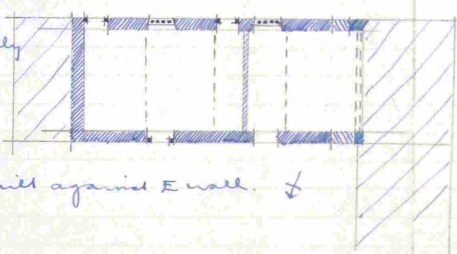
RECORD CARD FOR SECULAR MONUMENTS.

(N.B.—Detail of special interest is to be entered here, but described fully on a separate card.)

1. Name and situation of monument (with owner's Name and Address). *Ba. at Cogo Farm*
2 miles S.S.E. of church.

2. General appearance: (a) No. of storeys. *2.*
(b) Building materials. *Stone rubble.*
(c) Roofs. *Stone slates.*

3. Historical development (with dates and small sketch plan).
Built probably early late in 16th or early 17th c. and possibly originally a house. In modern times a new floor has been inserted to hay loft & large barn built on at the W end & an addition built against E wall.



4. Special features (if any).

5. Elevations: (Beginning with the main front, and mentioning, in the following order:—(a) Walls; (b) Gables; (c) Doors; (d) Windows; (e) Chimneys; (f) Rainwater heads and pipes.)

S. Elev. *Stone rubble. On ground floor is a blocked door. Two stop chamfered door frames with battened doors hung on strap hinges. There is a two/ four light diamond mullioned window. On 1st floor an a 5 light diamond mullioned window & a blocked window with 2 slit windows between them.*

W. Elev. *Incorporated into later barn in which the exposed timber framed partition can be seen.*

N. Elev. *On ground floor is stop chamfered wood door frame with battened door. Towards W end upper part of wall has been built & openings for pigeon loft inserted.*

E. Elev. *Gabled. Exposed timbers. On 1st floor level is a 4 light diamond mullioned window with wood lintel above.*

6. Grounds: (a) Gardens; (b) Outbuildings; (c) Statuary, sundials, etc.

The present farm house would appear to be a late 18th or early 19th c. building but it incorporates some old material.

County. *Herefordshire* Parish. *Manepton* Sub-Commission. *Secular* No. of Monument. *17*

(89,102). Ws.33,349—47, 500, 12/13. A.&E.W.
(97,153). „ 5621—53, 6000, 5/14. „

P.T.O.

The History of Ewyas Lacy

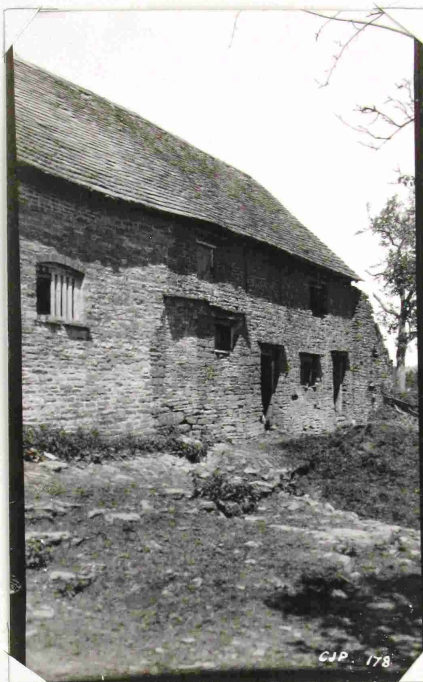
Document Record

7. Interior: (Disposition of rooms, if original, giving fittings as they occur (see list), beginning with the ground floor, following with the basement, and working up to the attics; staircases in the same manner.)

Fittings:

(Reminder list).

- (1) Ceilings.
- (2) Cupboards (fixed).
- (3) Doors and Overdoors.
- (4) Fireplaces and Mantel-pieces.
- (5) Glass.
- (6) Paintings.
- (7) Panelling.
- (8) Parquetry and floors.
- (9) Plasterwork on internal walls.
- (10) Roofs and beams (internal).
- (11) Screens.
- (12) Tapestries.
- (13) Miscellaneous (e.g., carving, ironwork, locks, &c.).



The three roof trusses are of type



8. Condition: Fair.

9. Visited by (with dates): A.T. Phillips. May 1927.

10. Bibliography:

11. No. of Ordnance Sheet (6-in.): XLIII. S.E.

12. Signature of Investigator: A.T. Phillips

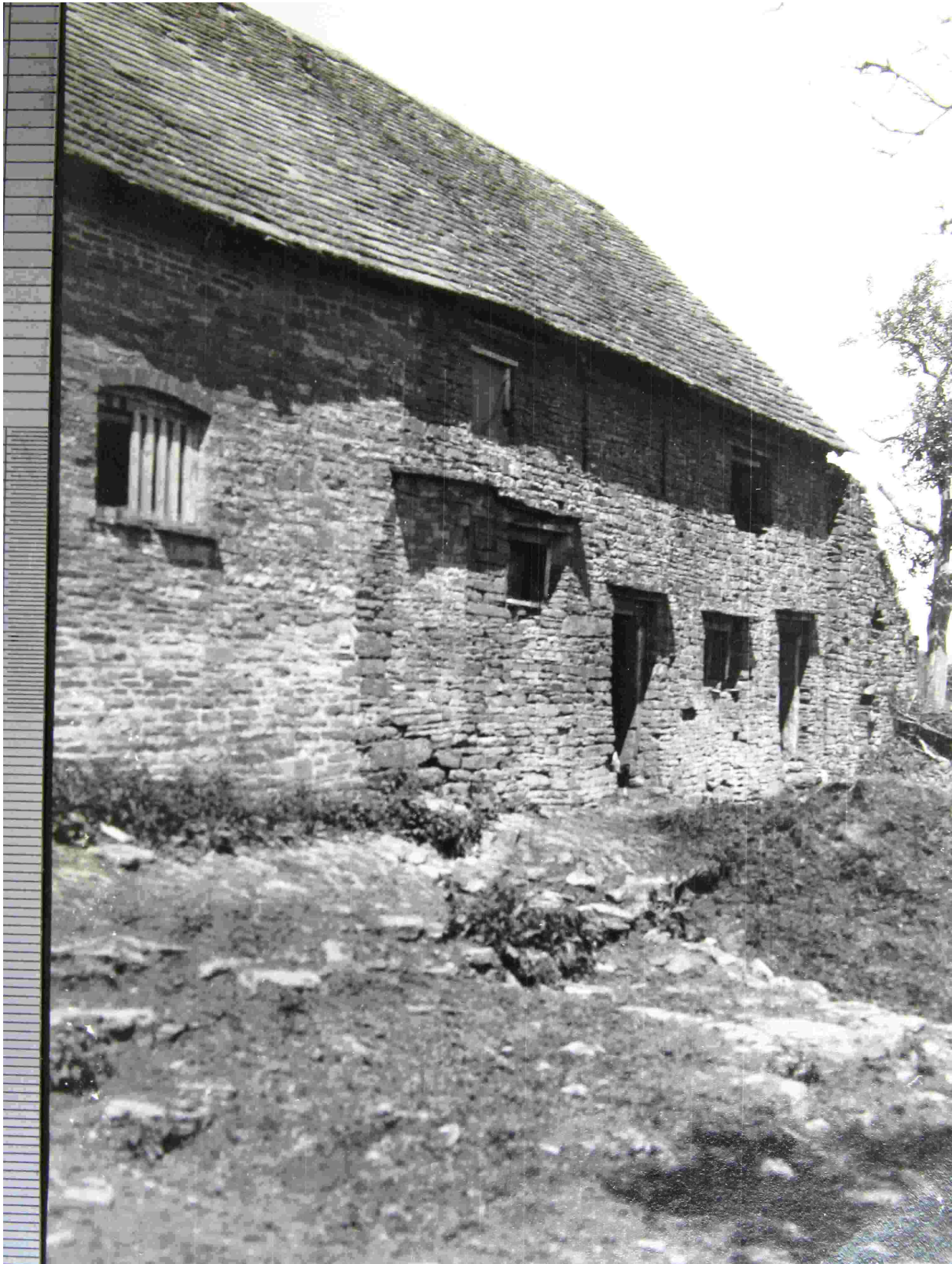
The History of Ewyas Lacy

Document Record



The History of Ewyas Lacy

Document Record



The History of Ewyas Lacy

Document Record

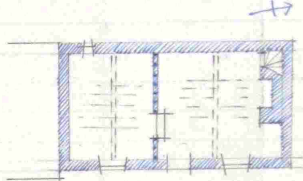
B. RECORD CARD FOR SECULAR MONUMENTS.

(N.B.—Detail of special interest is to be entered here, but described fully on a separate card.)

1. Name and situation of **Monument** (with owner's Name and Address). *Charity Farm in Odeon Valley about 3/4 mile W. S. W. of Church.*

2. General appearance: (a) No. of storeys. *1 + attic*
(b) Building materials. *Stone rubble*
(c) Roofs. *Stone slates*

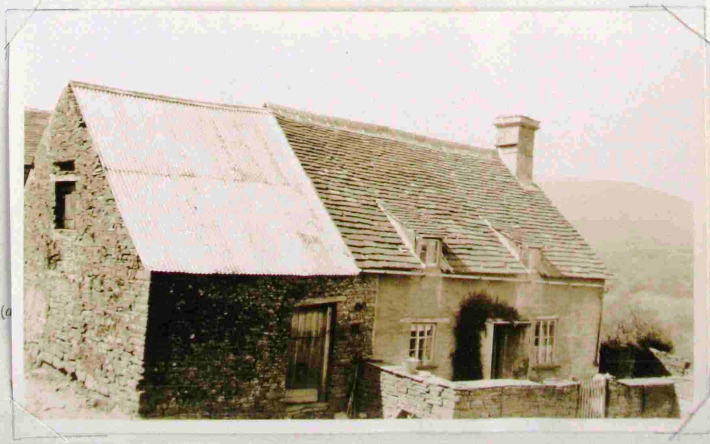
3. Historical development (with dates and small sketch plan).
Like the house. In modern times minor alterations have taken place & a barn has been built on at the S. end.



4. Special features (if any)

5. Elevations: (Beginning with the main front, and mentioning, in the following order:—(a) Walls; (b) Gables; (c) Doors; (d) Windows; (e) Chimneys; (f) Rainwater heads and pipes.)

*East Elev. Rubble. 2 dormers.
South Elev. Gable. Practically concealed by barn.
West Elev. Nothing note.
North Elev. Gabled. Square stone shaft with projecting strings & cap.*



6. Grounds: (a)

County. *Herefordshire* Parish. *Leominster* Sub-Commission. *Sevel* No. of Monument. *2*

(59,102). Wt. 33,340—47. 500. 12/13. A. & E. W.
(97,153). " 5921—53. 0000. 5/14. "

P.T.O.

The History of Ewyas Lacy

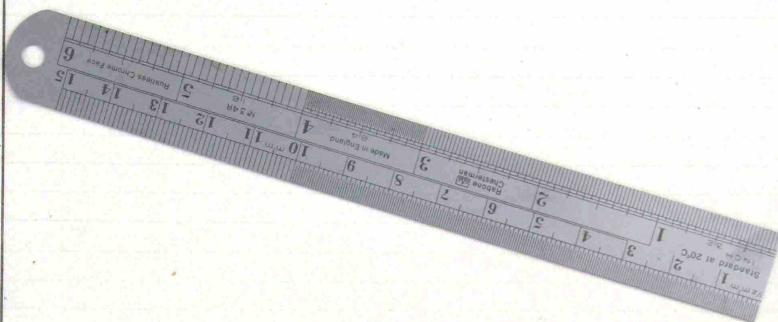
Document Record

7. **Interior:** (Disposition of rooms, if original, giving fittings as they occur (see list), beginning with the ground floor, following with the basement, and working up to the attics; staircases in the same manner.)

Fittings:

(Reminder list).

- (1) Ceilings
- (2) Cupboards (fixed).
- (3) Doors and Overdoors.
- (4) Fireplaces and Mantel-pieces.
- (5) Glass.
- (6) Paintings.
- (7) Panelling.
- (8) Parquetry and floors.
- (9) Plasterwork on internal walls.
- (10) Roofs and beams (internal).
- (11) Screens.
- (12) Tapestries.
- (13) Miscellaneous (e.g., carving, ironwork, locks, &c.).



Partition between 2 ground floor rooms is framed
with wood panels between framing.
Ceilings of ground floor rooms have stop chamfered
beams & exposed joists.

8. **Condition:** Fair.

9. **Visited by** (with dates): J.T. Phillips. May 1927.

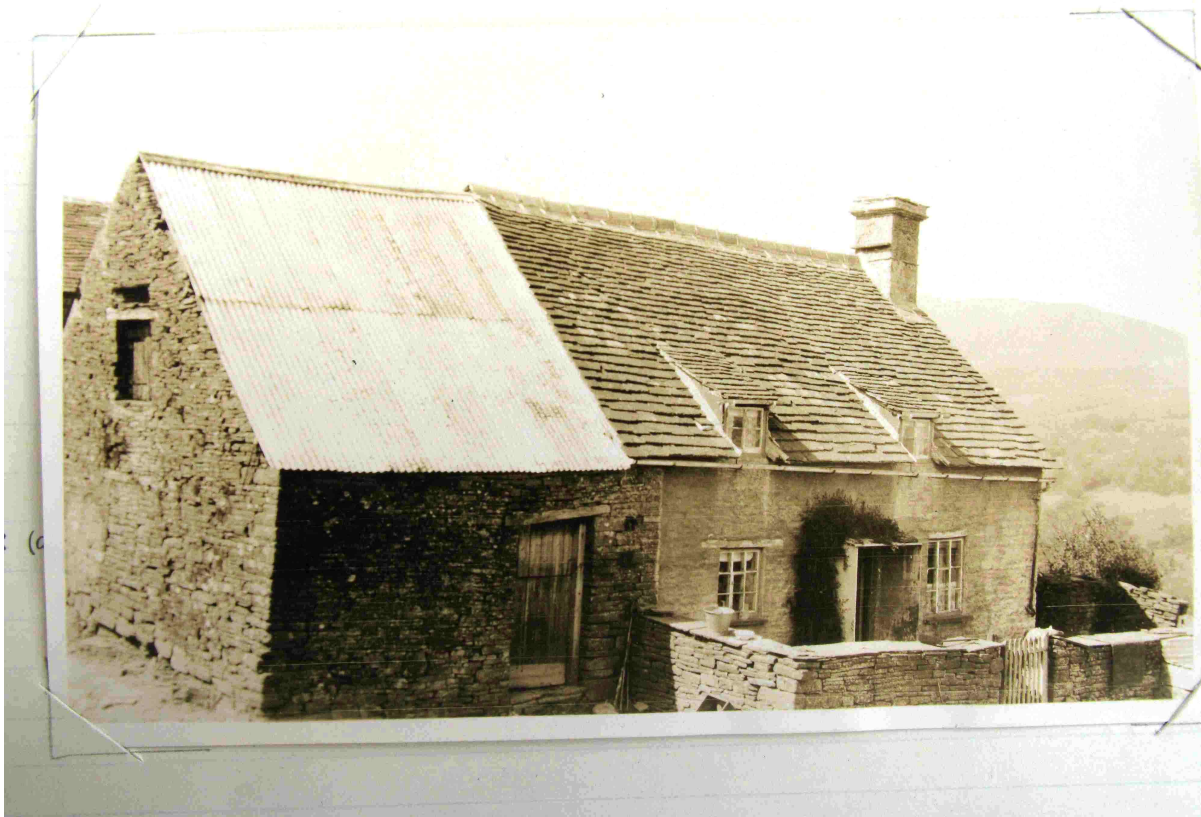
10. **Bibliography:**

11. **No. of Ordnance Sheet** (6-in.): XLIII. N.E.

12. **Signature of Investigator.** J.T. Phillips

The History of Ewyas Lacy

Document Record



The History of Ewyas Lacy

Document Record

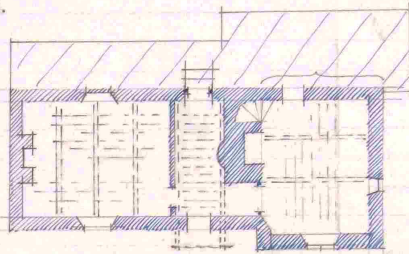
B. RECORD CARD FOR SECULAR MONUMENTS.

(N.B.—Detail of special interest is to be entered here, but described fully on a separate card.)

1. **Name and situation of Monument** (with owner's Name and Address). *Glan-dwr in Olcham Valley about 1 mile W.N.W of church.*

2. **General appearance:** (a) No. of storeys. *1 + attic*
(b) Building materials. *Stone rubble.*
(c) Roofs. *Stone slates.*

3. **Historical development** (with dates and small sketch plan).
late 16th or early 17th c. house. In modern times an addition has been built for whole length of W side & the W front of most S room on 1st floor has been raised to obtain 2 stories.



4. **Special features** (if any).
Cross beams in hallway carried through outside wall where they project, are chamfered shaped & form brackets for lean-to hood over entrance door.

5. **Elevations:** (Beginning with the main front, and mentioning, in the following order:—(a) Walls; (b) Gables; (c) Doors; (d) Windows; (e) Chimneys; (f) Rainwater heads and pipes.)

E. Elev. Gabled projecting eave at N end. lean-to roofed hood of wide projection over doorway with segmental beam beneath rafter feet supported on brackets formed as stated above from projecting ends of cross beams in hallway.

W. Elev. Concealed by mod. lean-to. There is a blocked window in wall of most S. room & above roof is square stone chimney shaft to bedroom fireplace.

S. Elev. Gabled. Square chimney shaft built. There is a projecting plinth at this end of house.

N. Elev. Has nothing of note.

There is a square stone central chimney with projecting flagstone string & projecting cap.

6. **Grounds:** (a) Gardens; (b) Outbuildings; (c) Statuary, sundials, etc.

County. *Shropshire* Parish. *Manley* Sub-Commission. *Sealer.* No. of Monument. *113*

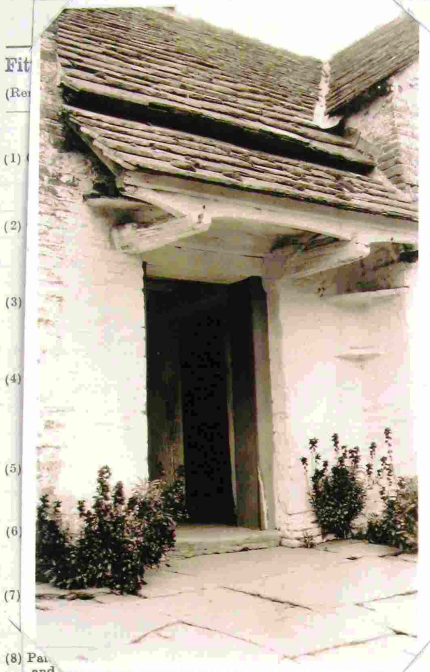
(89,102). Wt. 33, 349—47. 500. 12/13. A.&E.W.
(97,153). „ 5621—53. 6000. 5/14. „

P.T.O.

The History of Ewyas Lacy

Document Record

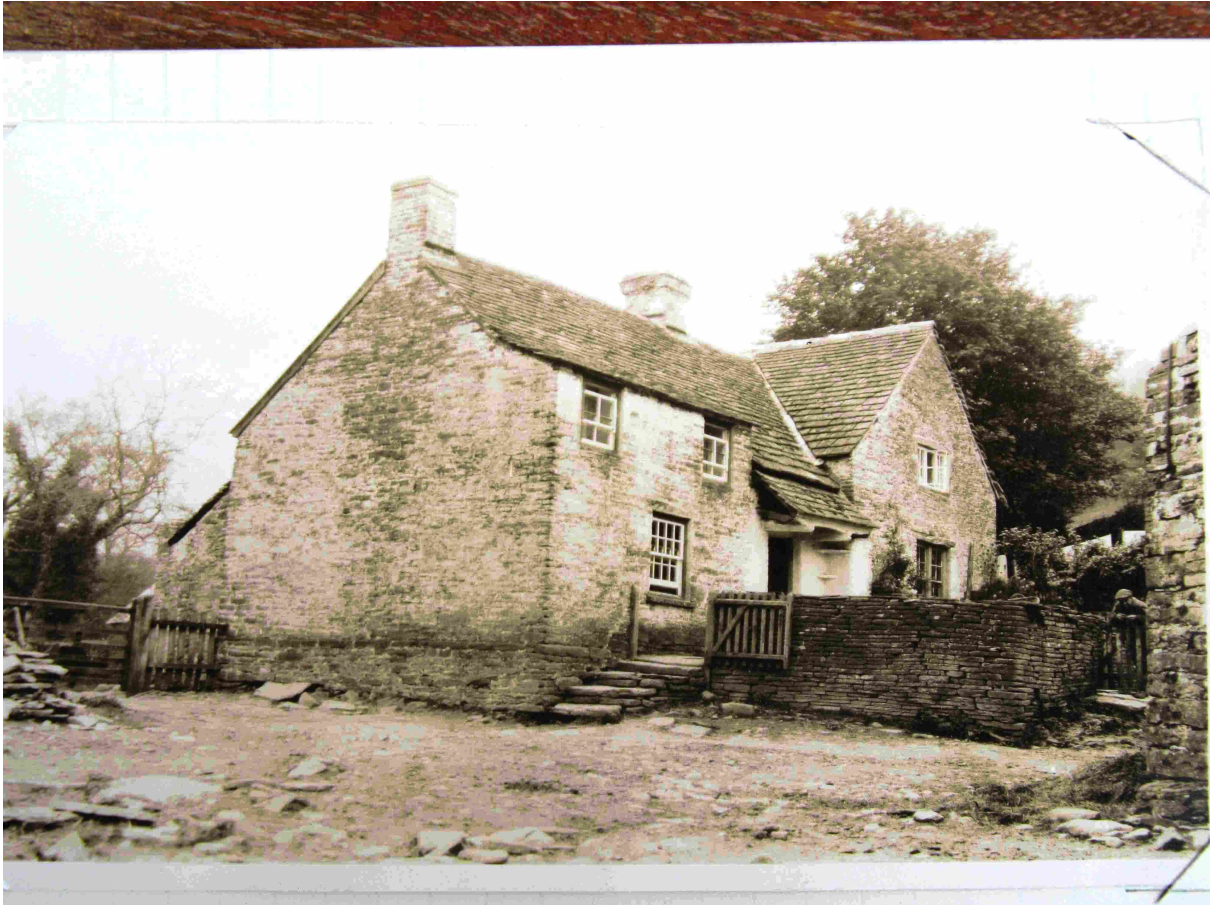
7. Interior: (Disposition of rooms, if original, giving fittings as they occur (see list), beginning with the basement, and working up to the attics:



- (1) Fit
- (2) (Re)
- (3) (1)
- (4) (2)
- (5) (3)
- (6) (4)
- (7) (5)
- (8) (6)
- (9) (7)
- (10) (8)
- (11) (9)
- (12) (10)
- (13) (11)
- (14) (12)
- (15) (13)
- (16) (14)
- (17) (15)
- (18) (16)
- (19) (17)
- (20) (18)
- (21) (19)
- (22) (20)
- (23) (21)
- (24) (22)
- (25) (23)
- (26) (24)
- (27) (25)
- (28) (26)
- (29) (27)
- (30) (28)
- (31) (29)
- (32) (30)
- (33) (31)
- (34) (32)
- (35) (33)
- (36) (34)
- (37) (35)
- (38) (36)
- (39) (37)
- (40) (38)
- (41) (39)
- (42) (40)
- (43) (41)
- (44) (42)
- (45) (43)
- (46) (44)
- (47) (45)
- (48) (46)
- (49) (47)
- (50) (48)
- (51) (49)
- (52) (50)
- (53) (51)
- (54) (52)
- (55) (53)
- (56) (54)
- (57) (55)
- (58) (56)
- (59) (57)
- (60) (58)
- (61) (59)
- (62) (60)
- (63) (61)
- (64) (62)
- (65) (63)
- (66) (64)
- (67) (65)
- (68) (66)
- (69) (67)
- (70) (68)
- (71) (69)
- (72) (70)
- (73) (71)
- (74) (72)
- (75) (73)
- (76) (74)
- (77) (75)
- (78) (76)
- (79) (77)
- (80) (78)
- (81) (79)
- (82) (80)
- (83) (81)
- (84) (82)
- (85) (83)
- (86) (84)
- (87) (85)
- (88) (86)
- (89) (87)
- (90) (88)
- (91) (89)
- (92) (90)
- (93) (91)
- (94) (92)
- (95) (93)
- (96) (94)
- (97) (95)
- (98) (96)
- (99) (97)
- (100) (98)
- (101) (99)
- (102) (100)
- (103) (101)
- (104) (102)
- (105) (103)
- (106) (104)
- (107) (105)
- (108) (106)
- (109) (107)
- (110) (108)
- (111) (109)
- (112) (110)
- (113) (111)
- (114) (112)
- (115) (113)
- (116) (114)
- (117) (115)
- (118) (116)
- (119) (117)
- (120) (118)
- (121) (119)
- (122) (120)
- (123) (121)
- (124) (122)
- (125) (123)
- (126) (124)
- (127) (125)
- (128) (126)
- (129) (127)
- (130) (128)
- (131) (129)
- (132) (130)
- (133) (131)
- (134) (132)
- (135) (133)
- (136) (134)
- (137) (135)
- (138) (136)
- (139) (137)
- (140) (138)
- (141) (139)
- (142) (140)
- (143) (141)
- (144) (142)
- (145) (143)
- (146) (144)
- (147) (145)
- (148) (146)
- (149) (147)
- (150) (148)
- (151) (149)
- (152) (150)
- (153) (151)
- (154) (152)
- (155) (153)
- (156) (154)
- (157) (155)
- (158) (156)
- (159) (157)
- (160) (158)
- (161) (159)
- (162) (160)
- (163) (161)
- (164) (162)
- (165) (163)
- (166) (164)
- (167) (165)
- (168) (166)
- (169) (167)
- (170) (168)
- (171) (169)
- (172) (170)
- (173) (171)
- (174) (172)
- (175) (173)
- (176) (174)
- (177) (175)
- (178) (176)
- (179) (177)
- (180) (178)
- (181) (179)
- (182) (180)
- (183) (181)
- (184) (182)
- (185) (183)
- (186) (184)
- (187) (185)
- (188) (186)
- (189) (187)
- (190) (188)
- (191) (189)
- (192) (190)
- (193) (191)
- (194) (192)
- (195) (193)
- (196) (194)
- (197) (195)
- (198) (196)
- (199) (197)
- (200) (198)
- (201) (199)
- (202) (200)
- (203) (201)
- (204) (202)
- (205) (203)
- (206) (204)
- (207) (205)
- (208) (206)
- (209) (207)
- (210) (208)
- (211) (209)
- (212) (210)
- (213) (211)
- (214) (212)
- (215) (213)
- (216) (214)
- (217) (215)
- (218) (216)
- (219) (217)
- (220) (218)
- (221) (219)
- (222) (220)
- (223) (221)
- (224) (222)
- (225) (223)
- (226) (224)
- (227) (225)
- (228) (226)
- (229) (227)
- (230) (228)
- (231) (229)
- (232) (230)
- (233) (231)
- (234) (232)
- (235) (233)
- (236) (234)
- (237) (235)
- (238) (236)
- (239) (237)
- (240) (238)
- (241) (239)
- (242) (240)
- (243) (241)
- (244) (242)
- (245) (243)
- (246) (244)
- (247) (245)
- (248) (246)
- (249) (247)
- (250) (248)
- (251) (249)
- (252) (250)
- (253) (251)
- (254) (252)
- (255) (253)
- (256) (254)
- (257) (255)
- (258) (256)
- (259) (257)
- (260) (258)
- (261) (259)
- (262) (260)
- (263) (261)
- (264) (262)
- (265) (263)
- (266) (264)
- (267) (265)
- (268) (266)
- (269) (267)
- (270) (268)
- (271) (269)
- (272) (270)
- (273) (271)
- (274) (272)
- (275) (273)
- (276) (274)
- (277) (275)
- (278) (276)
- (279) (277)
- (280) (278)
- (281) (279)
- (282) (280)
- (283) (281)
- (284) (282)
- (285) (283)
- (286) (284)
- (287) (285)
- (288) (286)
- (289) (287)
- (290) (288)
- (291) (289)
- (292) (290)
- (293) (291)
- (294) (292)
- (295) (293)
- (296) (294)
- (297) (295)
- (298) (296)
- (299) (297)
- (300) (298)
- (301) (299)
- (302) (300)
- (303) (301)
- (304) (302)
- (305) (303)
- (306) (304)
- (307) (305)
- (308) (306)
- (309) (307)
- (310) (308)
- (311) (309)
- (312) (310)
- (313) (311)
- (314) (312)
- (315) (313)
- (316) (314)
- (317) (315)
- (318) (316)
- (319) (317)
- (320) (318)
- (321) (319)
- (322) (320)
- (323) (321)
- (324) (322)
- (325) (323)
- (326) (324)
- (327) (325)
- (328) (326)
- (329) (327)
- (330) (328)
- (331) (329)
- (332) (330)
- (333) (331)
- (334) (332)
- (335) (333)
- (336) (334)
- (337) (335)
- (338) (336)
- (339) (337)
- (340) (338)
- (341) (339)
- (342) (340)
- (343) (341)
- (344) (342)
- (345) (343)
- (346) (344)
- (347) (345)
- (348) (346)
- (349) (347)
- (350) (348)
- (351) (349)
- (352) (350)
- (353) (351)
- (354) (352)
- (355) (353)
- (356) (354)
- (357) (355)
- (358) (356)
- (359) (357)
- (360) (358)
- (361) (359)
- (362) (360)
- (363) (361)
- (364) (362)
- (365) (363)
- (366) (364)
- (367) (365)
- (368) (366)
- (369) (367)
- (370) (368)
- (371) (369)
- (372) (370)
- (373) (371)
- (374) (372)
- (375) (373)
- (376) (374)
- (377) (375)
- (378) (376)
- (379) (377)
- (380) (378)
- (381) (379)
- (382) (380)
- (383) (381)
- (384) (382)
- (385) (383)
- (386) (384)
- (387) (385)
- (388) (386)
- (389) (387)
- (390) (388)
- (391) (389)
- (392) (390)
- (393) (391)
- (394) (392)
- (395) (393)
- (396) (394)
- (397) (395)
- (398) (396)
- (399) (397)
- (400) (398)
- (401) (399)
- (402) (400)
- (403) (401)
- (404) (402)
- (405) (403)
- (406) (404)
- (407) (405)
- (408) (406)
- (409) (407)
- (410) (408)
- (411) (409)
- (412) (410)
- (413) (411)
- (414) (412)
- (415) (413)
- (416) (414)
- (417) (415)
- (418) (416)
- (419) (417)
- (420) (418)
- (421) (419)
- (422) (420)
- (423) (421)
- (424) (422)
- (425) (423)
- (426) (424)
- (427) (425)
- (428) (426)
- (429) (427)
- (430) (428)
- (431) (429)
- (432) (430)
- (433) (431)
- (434) (432)
- (435) (433)
- (436) (434)
- (437) (435)
- (438) (436)
- (439) (437)
- (440) (438)
- (441) (439)
- (442) (440)
- (443) (441)
- (444) (442)
- (445) (443)
- (446) (444)
- (447) (445)
- (448) (446)
- (449) (447)
- (450) (448)
- (451) (449)
- (452) (450)
- (453) (451)
- (454) (452)
- (455) (453)
- (456) (454)
- (457) (455)
- (458) (456)
- (459) (457)
- (460) (458)
- (461) (459)
- (462) (460)
- (463) (461)
- (464) (462)
- (465) (463)
- (466) (464)
- (467) (465)
- (468) (466)
- (469) (467)
- (470) (468)
- (471) (469)
- (472) (470)
- (473) (471)
- (474) (472)
- (475) (473)
- (476) (474)
- (477) (475)
- (478) (476)
- (479) (477)
- (480) (478)
- (481) (479)
- (482) (480)
- (483) (481)
- (484) (482)
- (485) (483)
- (486) (484)
- (487) (485)
- (488) (486)
- (489) (487)
- (490) (488)
- (491) (489)
- (492) (490)
- (493) (491)
- (494) (492)
- (495) (493)
- (496) (494)
- (497) (495)
- (498) (496)
- (499) (497)
- (500) (498)
- (501) (499)
- (502) (500)
- (503) (501)
- (504) (502)
- (505) (503)
- (506) (504)
- (507) (505)
- (508) (506)
- (509) (507)
- (510) (508)
- (511) (509)
- (512) (510)
- (513) (511)
- (514) (512)
- (515) (513)
- (516) (514)
- (517) (515)
- (518) (516)
- (519) (517)
- (520) (518)
- (521) (519)
- (522) (520)
- (523) (521)
- (524) (522)
- (525) (523)
- (526) (524)
- (527) (525)
- (528) (526)
- (529) (527)
- (530) (528)
- (531) (529)
- (532) (530)
- (533) (531)
- (534) (532)
- (535) (533)
- (536) (534)
- (537) (535)
- (538) (536)
- (539) (537)
- (540) (538)
- (541) (539)
- (542) (540)
- (543) (541)
- (544) (542)
- (545) (543)
- (546) (544)
- (547) (545)
- (548) (546)
- (549) (547)
- (550) (548)
- (551) (549)
- (552) (550)
- (553) (551)
- (554) (552)
- (555) (553)
- (556) (554)
- (557) (555)
- (558) (556)
- (559) (557)
- (560) (558)
- (561) (559)
- (562) (560)
- (563) (561)
- (564) (562)
- (565) (563)
- (566) (564)
- (567) (565)
- (568) (566)
- (569) (567)
- (570) (568)
- (571) (569)
- (572) (570)
- (573) (571)
- (574) (572)
- (575) (573)
- (576) (574)
- (577) (575)
- (578) (576)
- (579) (577)
- (580) (578)
- (581) (579)
- (582) (580)
- (583) (581)
- (584) (582)
- (585) (583)
- (586) (584)
- (587) (585)
- (588) (586)
- (589) (587)
- (590) (588)
- (591) (589)
- (592) (590)
- (593) (591)
- (594) (592)
- (595) (593)
- (596) (594)
- (597) (595)
- (598) (596)
- (599) (597)
- (600) (598)
- (601) (599)
- (602) (600)
- (603) (601)
- (604) (602)
- (605) (603)
- (606) (604)
- (607) (605)
- (608) (606)
- (609) (607)
- (610) (608)
- (611) (609)
- (612) (610)
- (613) (611)
- (614) (612)
- (615) (613)
- (616) (614)
- (617) (615)
- (618) (616)
- (619) (617)
- (620) (618)
- (621) (619)
- (622) (620)
- (623) (621)
- (624) (622)
- (625) (623)
- (626) (624)
- (627) (625)
- (628) (626)
- (629) (627)
- (630) (628)
- (631) (629)
- (632) (630)
- (633) (631)
- (634) (632)
- (635) (633)
- (636) (634)
- (637) (635)
- (638) (636)
- (639) (637)
- (640) (638)
- (641) (639)
- (642) (640)
- (643) (641)
- (644) (642)
- (645) (643)
- (646) (644)
- (647) (645)
- (648) (646)
- (649) (647)
- (650) (648)
- (651) (649)
- (652) (650)
- (653) (651)
- (654) (652)
- (655) (653)
- (656) (654)
- (657) (655)
- (658) (656)
- (659) (657)
- (660) (658)
- (661) (659)
- (662) (660)
- (663) (661)
- (664) (662)
- (665) (663)
- (666) (664)
- (667) (665)
- (668) (666)
- (669) (667)
- (670) (668)
- (671) (669)
- (672) (670)
- (673) (671)
- (674) (672)
- (675) (673)
- (676) (674)
- (677) (675)
- (678) (676)
- (679) (677)
- (680) (678)
- (681) (679)
- (682) (680)
- (683) (681)
- (684) (682)
- (685) (683)
- (686) (684)
- (687) (685)
- (688) (686)
- (689) (687)
- (690) (688)
- (691) (689)
- (692) (690)
- (693) (691)
- (694) (692)
- (695) (693)
- (696) (694)
- (697) (695)
- (698) (696)
- (699) (697)
- (700) (698)
- (701) (699)
- (702) (700)
- (703) (701)
- (704) (702)
- (705) (703)
- (706) (704)
- (707) (705)
- (708) (706)
- (709) (707)
- (710) (708)
- (711) (709)
- (712) (710)
- (713) (711)
- (714) (712)
- (715) (713)
- (716) (714)
- (717) (715)
- (718) (716)
- (719) (717)
- (720) (718)
- (721) (719)
- (722) (720)
- (723) (721)
- (724) (722)
- (725) (723)
- (726) (724)
- (727) (725)
- (728) (726)
- (729) (727)
- (730) (728)
- (731) (729)
- (732) (730)
- (733) (731)
- (734) (732)
- (735) (733)
- (736) (734)
- (737) (735)
- (738) (736)
- (739) (737)
- (740) (738)
- (741) (739)
- (742) (740)
- (743) (741)
- (744) (742)
- (745) (743)
- (746) (744)
- (747) (745)
- (748) (746)
- (749) (747)
- (750) (748)
- (751) (749)
- (752) (750)
- (753) (751)
- (754) (752)
- (755) (753)
- (756) (754)
- (757) (755)
- (758) (756)
- (759) (757)
- (760) (758)
- (761) (759)
- (762) (760)
- (763) (761)
- (764) (762)
- (765) (763)
- (766) (764)
- (767) (765)
- (768) (766)
- (769) (767)
- (770) (768)
- (771) (769)
- (772) (770)
- (773) (771)
- (774) (772)
- (775) (773)
- (776) (774)
- (777) (775)
- (778) (776)
- (779) (777)
- (780) (778)
- (781) (779)
- (782) (780)
- (783) (781)
- (784) (782)
- (785) (783)
- (786) (784)
- (787) (785)
- (788) (786)
- (789) (787)
- (790) (788)
- (791) (789)
- (792) (790)
- (793) (791)
- (794) (792)
- (795) (793)
- (796) (794)
- (797) (795)
- (798) (796)
- (799) (797)
- (800) (798)
- (801) (799)
- (802) (800)
- (803) (801)
- (804) (802)
- (805) (803)
- (806) (804)
- (807) (805)
- (808) (806)
- (809) (807)
- (810) (808)
- (811) (809)
- (812) (810)
- (813) (811)
- (814) (812)
- (815) (813)
- (816) (814)
- (817) (815)
- (818) (816)
- (819) (817)
- (820) (818)
- (821) (819)
- (822) (820)
- (823) (821)
- (824) (822)
- (825) (823)
- (826) (824)
- (827) (825)
- (828) (826)
- (829) (827)
- (830) (828)
- (831) (829)
- (832) (830)
- (833) (831)
- (834) (832)
- (835) (833)
- (836) (834)
- (837) (835)
- (838) (836)
- (839) (837)
- (840) (838)
- (841) (839)
- (842) (840)
- (843) (841)
- (844) (842)
- (845) (843)
- (846) (844)
- (847) (845)
- (848) (846)
- (849) (847)
- (850) (848)
- (851) (849)
- (852) (850)
- (853) (851)
- (854) (852)
- (855) (853)
- (856) (854)
- (857) (855)
- (858) (856)
- (859) (857)
- (860) (858)
- (861) (859)
- (862) (860)
- (863) (861)
- (864) (862)
- (865) (863)
- (866) (864)
- (867) (865)
- (868) (866)
- (869) (867)
- (870) (868)
- (871) (869)
- (872) (870)
- (873) (871)
- (874) (872)
- (8

The History of Ewyas Lacy

Document Record



The History of Ewyas Lacy

Document Record



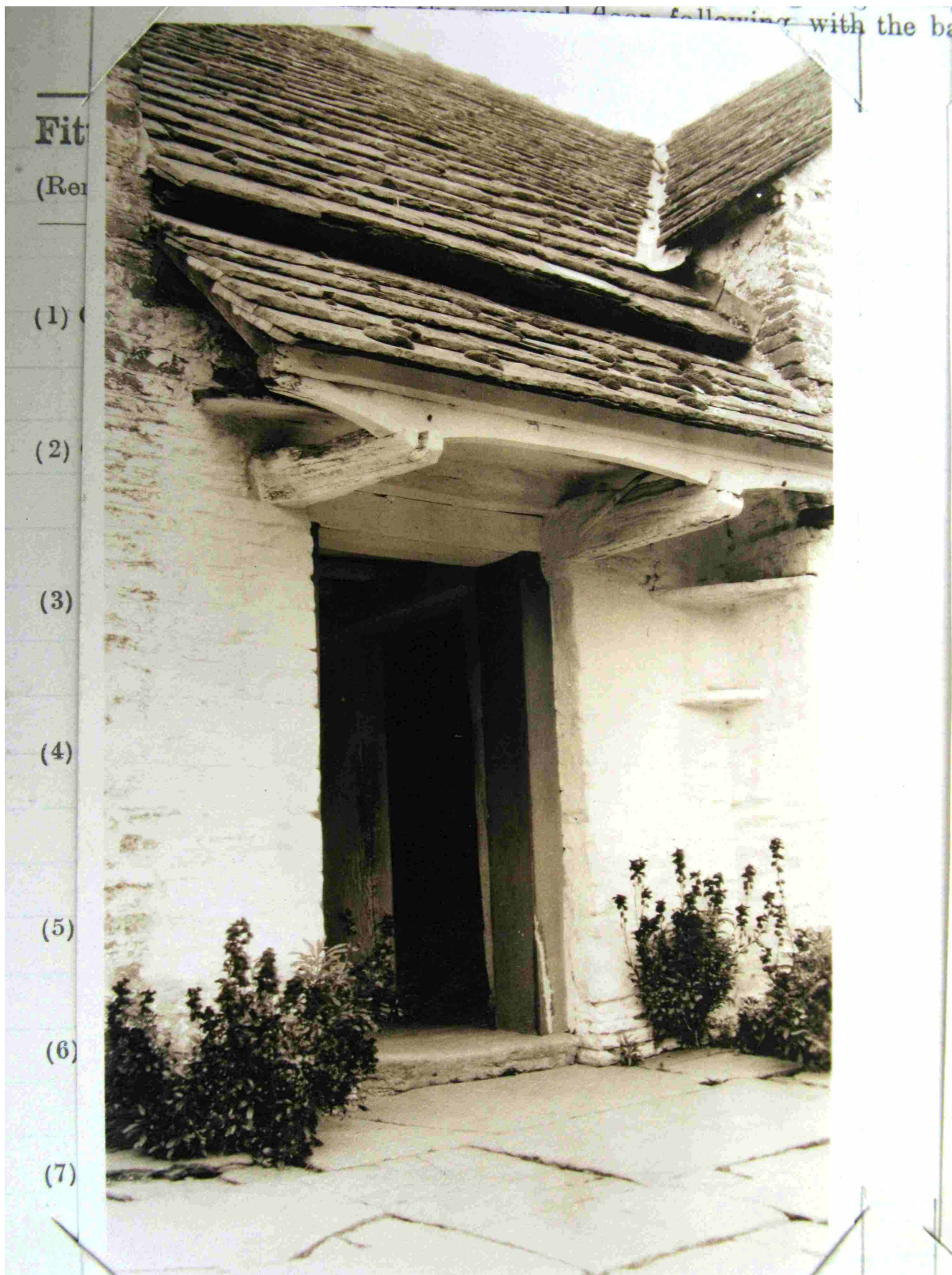
The History of Ewyas Lacy

Document Record



The History of Ewyas Lacy

Document Record



The History of Ewyas Lacy

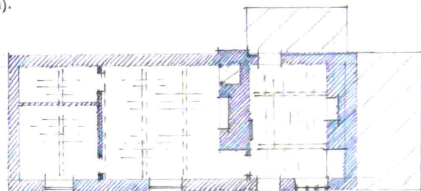
Document Record

B. RECORD CARD FOR SECULAR MONUMENTS.
(N.B.—Detail of special interest is to be entered here, but described fully on a separate card.)

1. Name and situation of Monument (with owner's Name and Address). *Upper Olchon Farm in Olchon Valley & nearly 1 1/4 miles W.N.W of Church.*

2. General appearance: (a) No. of storeys. *1 + attic*
(b) Building materials. *Rubble stone*
(c) Roofs. *Stone Slates*

3. Historical development (with dates and small sketch plan).
A late 16th or early 17th c. house. Later in 17th c. a further room was built on at the N.E. end. In modern times a few minor alterations have taken place, additions built on at N.E. end & lean-to on N.E. side.




4. Special features (if any).

5. Elevations: (Beginning with the main front, and mentioning, in the following order:—(a) Walls; (b) Gables; (c) Doors; (d) Windows; (e) Chimneys; (f) Rainwater heads and pipes.)


S.E. Elev. *Stone rubble. There is a slight ^{wood} casement with old frame mullions & 2 dormer windows.*

N.E. Elev. *Gable. Almost entirely hidden by modern addition. There is a rectangular stone chimney shaft with projecting flag stone strings & a 2 course projecting flag stone cap.*

N.W. Elev. *There is one blocked window above which is a flag stone label of form *

S.W. Elev. *Gables.*

The central stack—formerly the end stack of original house—has square stone shaft with projecting flag stone strings & 2 course projecting cap.



6. Grounds: (a)

(89,102). Wt. 33,340—47,500. 12/13. A.&E.W.
(97,153). " 5021—53,6000. 5/14. "

County. *Shropshire*
Parish. *Flamington*
Sub-Division. *Sevens*
No. of

The History of Ewyas Lacy

Document Record

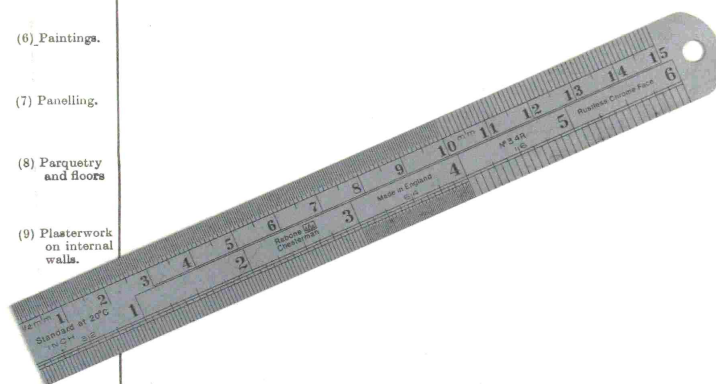
7. Interior: (Disposition of rooms, if original, giving fittings as they occur (see list), beginning with the ground floor, following with the basement, and working up to the attics; staircases in the same manner.)

Fittings:

(Reminder list).

- (1) Ceilings.
- (2) Cupboards (fixed).
- (3) Doors and Overdoors.
- (4) Fireplaces and Mantel-pieces.
- (5) Glass.
- (6) Paintings.
- (7) Panelling.
- (8) Parquetry and floors.
- (9) Plasterwork on internal walls.
- (11) Screens.
- (12) Tapestries.
- (13) Miscellaneous (e.g., carving, ironwork, locks, &c.).

The ceilings of all ground floor rooms have exposed stop chamfered beams & exposed joists. The three doorways in room S.W. front of hall all have segmental headed panelling.



8. Condition: Fair.

9. Visited by (with dates): A.T. Philips. May 1927.

10. Bibliography:

11. No. of Ordnance Sheet (6-in.): XLIII. N.E.

12. Signature of Investigator. A.T. Philips

The History of Ewyas Lacy

Document Record



The History of Ewyas Lacy

Document Record



The History of Ewyas Lacy

Document Record

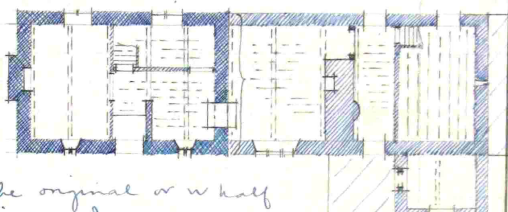
B. RECORD CARD FOR SECULAR MONUMENTS.

(N.B.—Detail of special interest is to be entered here, but described fully on a separate card.)

1. Name and situation of Monument (with owner's Name and Address). *Olehon Court*

2. General appearance: (a) No. of storeys. *W portion 2. E portion 1 rather.*
(b) Building materials. *Rubble stone walls. Ashlar dressings to porting w half.*
(c) Roofs. *Stone slates.*

3. Historical development (with dates and small sketch plan).
A late 15th c. house. In 17th c. it was extended to the E possibly incorporating an existing dairy or barn or some such building. The lean-to on S. was probably added about the same time or very slightly later & the roof of the original or W half



4. Special features (if any). *phouse raised. In modern times of barn has been built on at E. end a lean-to porch added.*

5. Elevations: (Beginning with the main front, and mentioning, in the following order:—(a) Walls; (b) Gables; (c) Doors; (d) Windows; (e) Chimneys; (f) Rainwater heads and pipes.)

S. Elev. Walls of rubble stone. The entrance doorway to W portion of house is gable with chamfered & centred arched head & top chamfered head. This doorway is flanked on either side by a two light window with ch. stone chamfered head jambs & tall & wide chamfered mullion while the lights are little more than slits. There are two dormer windows to the W portion the lower wall of which is largely hidden by lean-to.

W. Elev. Gabled. Rectangular outside stack with weathered sides & rectangular shaft with projecting cap of coursed flag stones. The gable has been partly rebuilt. In lean-to is a battened door with stop chamfered frame.

E. Elev. Gables to both W portion & E portion of house, with exposed timbers. Lower portion of wall concealed by modern building. (stop chamfered lintel)

N. Elev. Has modern windows etc. There is a door with stone jambs. The square central stack has been re-built above roof.

6. Grounds: (a) Gardens; (b) Outbuildings; (c) Statuary, sundials, etc.

County. *Shropshire*

Parish. *Chlanovegus*

Sub-Commission. *Secular*

No. of Monument. *10*

P.T.O.

(89,102). Wt. 33,349—47. 500. 12/13. A.&E.W.
(97,153). „ 5621—53. 0000. 5/14. „

The History of Ewyas Lacy

Document Record

7. Interior: (Disposition of rooms, if original, giving fittings as they occur (see list), beginning with the ground floor, following with the basement, and working up to the attics; staircases in the same manner.)

Fittings:

(Reminder list).

(1) Ceilings.

(2) Cupboards (fixed).

(3) Doors and Overdoors.

(4) Fireplaces and Mantel-pieces.

(5) Glass.

Entering the W portion, the ceilings of all ground floor chambers have stop chamfered beams, while the joists are exposed & stop chamfered except in most westerly room.

In E wall of this portion is a ^{stone} doorway with chamfered & centred arched head & joists & 3 steps down to floor of E half of house.

In this E portion the most W room has stop chamfered beam & exposed joists, while joists are exposed in remaining rooms.

In lean-to then is a timber stop chamfered truss.

In the attic is a battened door (17th c) hung on a pair of strap hinges.



8. Condition: *Fair*

9. Visited by (with dates): *A.T. Phillips . May. 1927.*

10. Bibliography:

11. No. of Ordnance Sheet (6.in.): *XLIII . N.E.*

12. Signature of Investigator. *A.T. Phillips*

The History of Ewyas Lacy

Document Record



The History of Ewyas Lacy

Document Record



The History of Ewyas Lacy

Document Record

B.

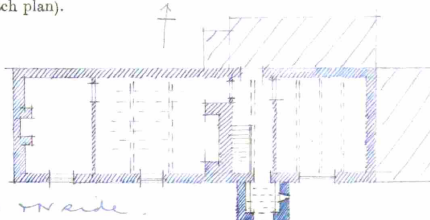
RECORD CARD FOR SECULAR MONUMENTS.

(N.B.—Detail of special interest is to be entered here, but described fully on a separate card.)

1. Name and situation of Monument (with owner's Name and Address). *Liss Farm*
in Lechom about 2 1/4 miles N.W. of Llanoch.
2. General appearance: (a) No. of storeys. *Porter building 2 frame 1 stone. Rest 1 story.*
(b) Building materials. *Stone rubble.*
(c) Roofs. *Stone slate.*

3. Historical development (with dates and small sketch plan).

A 17th c. porter building probably the same date. It has, however, been much remodelled mostly late in 18th c. In still more recent times additions have been built on at E end & N side.



4. Special features (if any)

5. Elevations: (Beginning with the main front, and mentioning, in the following order:—(a) Walls; (b) Gables; (c) Doors; (d) Windows; (e) Chimneys; (f) Rainwater heads and pipes.)

S. Elev. Porter is gabled & has stop chamfered beam over entrance & above same is a deep projecting stone string. Then is a similar string to ground floor window E of porch. Porter has stone seats on either side.

E. Elev. Gabled & exposed timbers. Low port concealed. Porter has a small slit window.

N. Elev. Nothing, gable & largely concealed by mod. lean-to.

W. Elev. Gabled. Square stone chimney shaft with projecting strings & cap.

Central stack square, stone, with projecting strings & 2 course cap.

6. Grounds:



(89,102). Wt. 33,349—47,000. 12/13. A.&E.W.
(97,153). " 5621—53,000. 5/14. "

T.O.

County.

Parish.

Sub-Commission.

Sealer.

No. of Monument.

The History of Ewyas Lacy

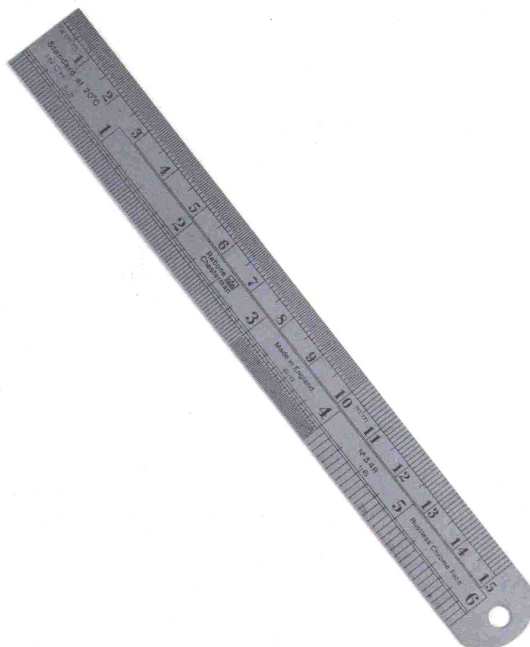
Document Record

7. Interior: (Disposition of rooms, if original, giving fittings as they occur (see list), beginning with the ground floor, following with the basement, and working up to the attics: staircases in the same manner.)

Fittings:

(Reminder list).

- (1) Ceilings
- (2) Cupboards (fixed).
- (3) Doors and Overdoors.
- (4) Fireplaces and Mantelpieces.
- (5) Glass.
- (6) Paintings.
- (7) Panelling.
- (8) Parquetry and floors.
- (9) Plasterwork on internal walls.
- (10) Roofs and beams (internal).
- (11) Screens.
- (12) Tapestries.
- (13) Miscellaneous (e.g., carving, ironwork, locks, &c.).



*Ceilings fall ground floor rooms have chamfered beams (those in room w open an exposed one) & some exposed joists.
Ceiling of porch has exposed chamfered joists with moulded stops.*

8. Condition: *Poor.*

9. Visited by (with dates): *A.T. Phillips. 1927.*

10. Bibliography:

11. No. of Ordnance Sheet (6-in.): *X411. N.E.*

12. Signature of Investigator: *A.T. Phillips*

The History of Ewyas Lacy

Document Record



The History of Ewyas Lacy

Document Record



The History of Ewyas Lacy

Document Record

B.

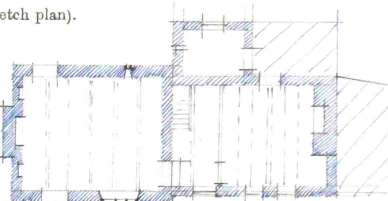
RECORD CARD FOR SECULAR MONUMENTS.

(N.B.—Detail of special interest is to be entered here, but described fully on a separate card.)

1. Name and situation of Monument (with owner's Name and Address). *Blaen-Olehon*
at head of Olehon Valley & about 2 1/2 miles N.W. of Church
2. General appearance: (a) No. of storeys. *1* *attic*
(b) Building materials. *Stone rubble*
(c) Roofs. *W half gable stone slates. Remainder modern slates.*

3. Historical development (with dates and small sketch plan).

The W. portion of house is
c. 1700 while E. W. half is
probably slightly earlier.
In modern times it has
been somewhat re-modelled.



4. Special features (if any)

5. Elevations: (Beginning with the main front, and mentioning, in the following order:—(a) Walls; (b) Gables; (c) Doors; (d) Windows; (e) Chimneys; (f) Rainwater heads and pipes.)

- S. Elev. Stone rubble. 1/3 light casement with wood frame*
mullions plain on exterior & moulded on interior side
(frame repaired externally).
- W. Elev. Gabled. Rectangular outside stack, weathered on*
N. side, & square shaft with projecting strips.
There is a blocked window to attic.
- E. Elev. Gabled. Gable partly re-built.*
- N. Elev. Projection has lean-to roof. Immediately E. of*
same is modern lean-to. On ground floor
is a small one light square window with
wide internal splay.

6. Grounds: (a)



(89,102). Wt. 33,349—47. 500. 12/13. A.&E.W.
(97,153). „ 5621—53. 6000. 5/14. „

P.T.O.

County. *Merionethshire*

Parish. *Planerbyr*

Sub-Commission. *Sander*

No. of Monument. *1*

The History of Ewyas Lacy

Document Record

7. **Interior :** (Disposition of rooms, if original, giving fittings as they occur (see list), beginning with the ground floor, following with the basement, and working up to the attics ; staircases in the same manner.)

Fittings :
(Reminder list).
(1) Ceilings
(2) Cupboards (fixed).
(3) Doors and Overdoors.
(4) Fireplaces and Mantel-pieces.
(5) Glass.
(6) Paintings.
(7) Panelling.
(8) Parquetry and floors.
(9) Plasterwork on internal walls.
(10) Roofs and beams (internal).
(11) Screens.
(12) Tapestries.
(13) Miscellaneous (e.g., carving, ironwork, locks, &c.).

Ground floor ceilings have exposed ^{step} chamfered beams & joists.

8. **Condition :** Fair.

9. **Visited by** (with dates): A.T. Philips. May. 1927.

10. **Bibliography :**

11. **No. of Ordnance Sheet** (6-in.): XLIII. N.E.

12. **Signature of Investigator.** A.T. Philips.

The History of Ewyas Lacy

Document Record



The History of Ewyas Lacy

Document Record



Observations:

Index page is at http://www.ewyaslacy.org.uk/doc.php?d=rs_ewy_0342