

The History of Ewyas Lacy

Document Record

Held at: Private Collection

Reference: RS

Source: Internet

Title: Digital Archive - Sale Particulars School House

Place name: Longtown

Date: 2025

Description:

School House

Longtown, Herefordshire



Guide Price £575,000
Added on 20/08/2025



The History of Ewyas Lacy

Document Record

PROPERTY TYPE

Detached

BEDROOMS 4

BATHROOMS 1

SIZE 1,490 sq ft; 138 sq m

TENURE Freehold

Key features

- 4 Bed Detached Victorian House
- Built in 1894 – Former Schoolmaster's House
- Foot of Longtown Castle (c.1100)
- Two Elegant Reception Rooms, Engineered Oak Floor
- Schmidt Kitchen with Corian Worktops
- Vaulted Garden Room with Guardian Roof
- Landscaped Garden with Castle Views & Patio Terrace
- Superb Black Mountains Walking Countryside
- Utility & Downstairs WC
- Beautiful Front & Rear Outlook

Description

An Elegant Characterful 4 Bedroom Detached Victorian House, built in 1894 as the former schoolmaster's residence, set at the very foot of Longtown Castle – an English Heritage site dating back to the 12th century.

Entrance Hall – Sitting Room – Drawing Room – Understairs Storage – Kitchen/Breakfast Room – Garden Room – Utility Room – Downstairs WC – Landing with Storage – Bedroom 1 – Bedroom 2 with Built-in Wardrobes – 2 Further Double Bedrooms – Family Bathroom – Rear Garden with Patio – Shed – Driveway – Front Courtyard

This characterful home boasts beautiful period architecture and thoughtfully chosen modern finishes; surrounded by the Black Mountains and glorious Herefordshire walking countryside.

This imposing detached home includes two elegant reception rooms, a Schmidt kitchen opening into a vaulted garden room, 4 first floor double bedrooms and a stylish contemporary family bathroom. Outside, the gardens enjoy a unique historic backdrop underneath Longtown castle, complemented by a generous lawn, patio terrace and landscaped borders. Longtown is a thriving village with a shop and post office, primary school, preschool, and two pubs within a mile.

The Property

Entrance Hall: A welcoming entrance with Karndean flooring underfoot and a staircase rising to the first floor, complete with decorative balustrade and storage beneath. The hallway provides access to both reception rooms and the kitchen, offering a practical central hub to the ground floor.



The History of Ewyas Lacy

Document Record

Sitting Room: Positioned to the front of the house, this inviting reception space is flooded with natural light from a large bay window fitted with bespoke shutters. Engineered oak flooring flows through the room, complementing the period fireplace with exposed timber lintel and inset woodburner. Built-in display cabinets with glazed doors and lower storage add both charm and functionality.

Drawing Room: A more formal reception room, also featuring engineered oak flooring and a working fireplace with marble surround and timber mantelpiece. Alcoves on either side are fitted with shelving and cabinetry, providing ideal display and storage. Tall sash windows with shutters frame the front and side aspect, filling the room with daylight.

Kitchen/Breakfast Room: A thoughtfully designed Schmidt kitchen fitted with a range of white units beneath sleek Corian worktops. Integrated appliances include a Neff hob, oven and fridge, alongside ample cupboard space and a breakfast bar for informal dining. The neutral tiling and practical layout create a sociable and functional cooking space that leads directly into the garden room.

Garden Room: A stunning extension with vaulted ceiling and Guardian roof, this light filled space is used as a dining and sitting area. Surrounded by full height glazing and with French doors opening directly to the garden terrace, it offers uninterrupted views of Longtown Castle and creates a year round entertaining space.

Utility Room: Fitted with a run of work surfaces, wall & base units, and space for appliances including washing machine, dryer and dishwasher. The utility has direct access to the garden and adjoins the downstairs WC.

Downstairs WC: Finished in a modern style with contemporary floor-to-ceiling wall tiling, WC and floating vanity basin with storage beneath. Could easily be converted into a ground floor wet room with shower if preferable.

First Floor Landing: A split landing with end window and built-in linen closet, carpeted underfoot and giving access to all four double bedrooms and the family bathroom.

Bedroom 1: A generous double bedroom, with two sash windows to the front & side aspect fitted with roman blinds, enjoying views across the surrounding countryside. There is ample space for freestanding furniture, making this an airy and welcoming principal room.

Bedroom 2: Another spacious double with a wall of fitted wardrobes offering plentiful storage, with the water tank housed in the end cupboard. A large sash window also looks out across the front, a large area of open grassland with trees opposite the house.

Bedroom 3: A light and well-proportioned double bedroom, currently arranged with fitted shelving and built-in wardrobe. The side aspect sash window and fitted carpets make this a versatile room for guests or family.

Bedroom 4: A well-presented bedroom, perfect as a child's room, home office or dressing room, with views over the rear garden and castle remains, providing a striking historic outlook.



The History of Ewyas Lacy

Document Record

Family Bathroom: Beautifully appointed with a contemporary white suite, comprising a full-sized bath with chrome taps, separate curved Aqualisa power shower, low flush WC, contemporary vanity unit with inset basin & mixer tap, and chrome heated towel rail. Both the floor and walls are tiled, while a large window ensures the room is bright and well ventilated.

Outside

The house enjoys a beautiful approach; a front courtyard is encased by a stone wall and iron gate, opening to a path leading to the grand front door, which features an ornate door knocker, traditional lantern-style outside light and hanging basket. A driveway to the left-hand side offers parking for 2 vehicles, with a saxon spear gate opening to the garden patio.

To the rear lies a beautifully kept garden with a wide paved terrace, perfect for al fresco dining and entertaining while enjoying the dramatic backdrop of Longtown Castle. Beyond a ball top fence lies a level lawn interspersed with mature planting, fruit trees, and borders, with a garden shed providing useful storage. With its unique historic setting at the foot of Longtown Castle, the garden offers a private and atmospheric outdoor retreat.

Gallery:

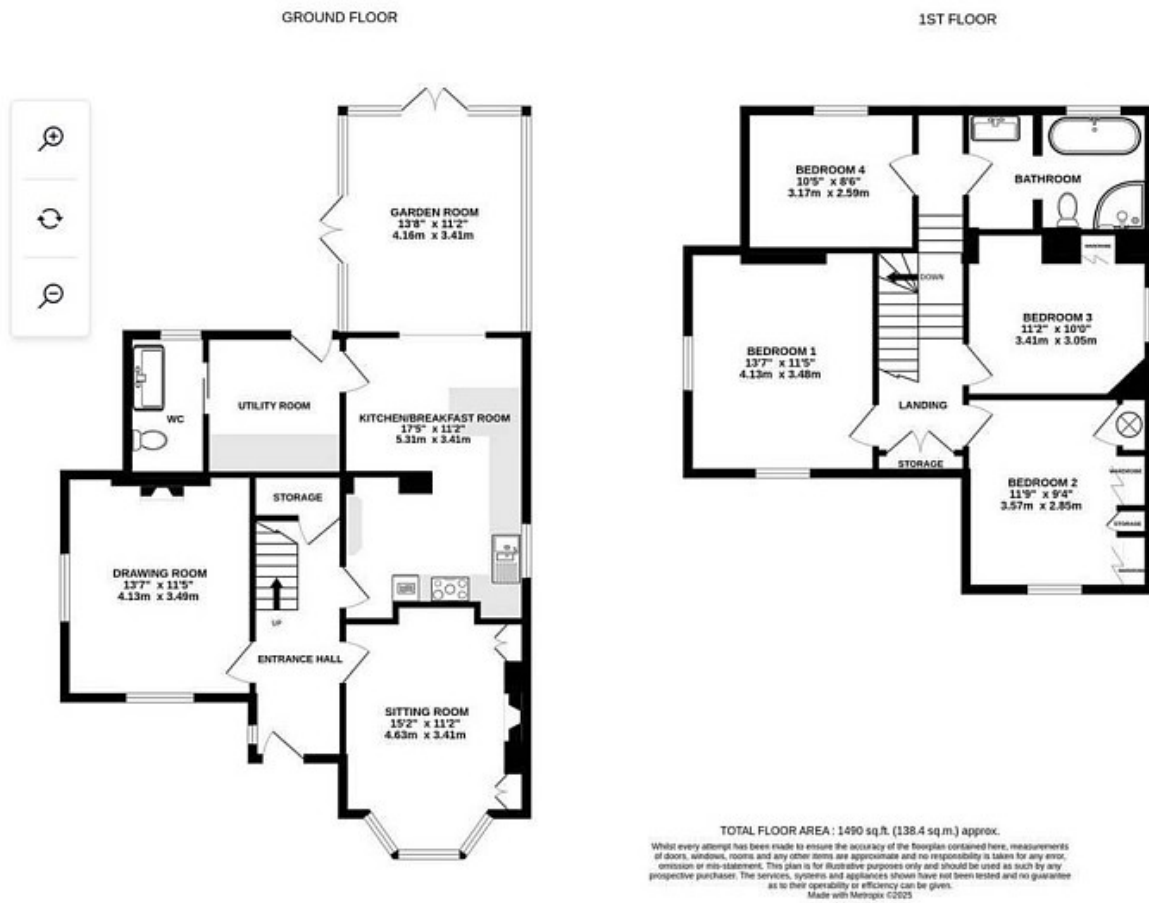
The History of Ewyas Lacy

Document Record



The History of Ewyas Lacy

Document Record



The History of Ewyas Lacy

Document Record



The History of Ewyas Lacy

Document Record



The History of Ewyas Lacy

Document Record



The History of Ewyas Lacy

Document Record



The History of Ewyas Lacy

Document Record



The History of Ewyas Lacy

Document Record



The History of Ewyas Lacy

Document Record



The History of Ewyas Lacy

Document Record



The History of Ewyas Lacy

Document Record



The History of Ewyas Lacy

Document Record



The History of Ewyas Lacy

Document Record



The History of Ewyas Lacy

Document Record



The History of Ewyas Lacy

Document Record



The History of Ewyas Lacy

Document Record



The History of Ewyas Lacy

Document Record



The History of Ewyas Lacy

Document Record



The History of Ewyas Lacy

Document Record



The History of Ewyas Lacy

Document Record



The History of Ewyas Lacy

Document Record



The History of Ewyas Lacy

Document Record



The History of Ewyas Lacy

Document Record



The History of Ewyas Lacy

Document Record



The History of Ewyas Lacy

Document Record



The History of Ewyas Lacy

Document Record



The History of Ewyas Lacy

Document Record



Practicalities

Herefordshire Council Tax Band 'E'
Oil-Fired Central Heating (new Grant boiler – 2 years old)
Double Glazed Sash & Casement Windows
Mains Electricity & Water
Private Drainage (septic tank)
Fibre Broadband Available

Observations:

None